



Precision Finishing Materials & Accessories

At its purpose built laboratory and production facility, based in Kent England, **Algasan** manufactures a range of speciality diamond-based abrasive products, specifically formulated for use in all precision engineering situations including micro lapping, polishing, surface finishing and metallographic laboratories.

Algament is a range of diamond abrasive pastes, slurries, emulsions and suspensions, manufactured in formulae to suit specific applications each being produced in a full spectrum of micron sizes. Additionally we have the capability to advise and manufacture to customers own specifications.

Using only the finest raw materials, purchased from positively authenticated sources, **Algasan** manufactures products that produce precision results time after time.

Also available from **Algasan** is a full range of accessories and equipment including, Felts, Sticks, Finishing stones and high quality fine finishing Ceramic Stones

Algasan has a total commitment to customer service, product quality and a fair pricing policy.

ALGASAN INTERNATIONAL LTD.

Unit 5 Pettings Court Farm, Hodsoll Street Nr. Wrotham, Sevenoaks, Kent. TN15 7LH. U.K.

Tel. +44 (0) 1732 824829 Fax. +44 (0) 1732 824828

www.Algasan.co.uk email sales@Algasan.co.uk



Precision Finishing Materials & Accessories

Algament Diamond Compounds for Precision Engineering



❖ Algament Diamond Abrasive Compound.

Algament Diamond compounds are ideally suited to most polishing operations where a high precision finish is required. Algament Diamond compounds are perfect for toolroom metallographic and precision production applications such as mould tool polishing. Affording rapid stock removal and a superfine finish.

❖ Constant Performance control.

Manufactured using only the finest raw materials, purchased from positively authenticated sources, Algament compounds are manufactured to provide guaranteed consistent results time after time.

❖ Versatile.

Algament GP Diamond abrasive compound has been formulated to be an all-purpose product.

Algament OS Diamond abrasive compound is specifically formulated for high pressure /temperature applications.

Algament WS Diamond compound is a traditional water soluble compound for those who prefer to use water based products.

❖ Economy and efficiency.

Algament compounds are available in 5g, 10g and 20g syringes. Allowing both economical and contamination free usage. Larger syringes and pots are available on request.

The table below lists the standard micron sizes, colours codes and concentrations available.

| Micron Size | Colour | Concentrations | | |
|-------------|--------------|----------------|----------|--------|
| | | Medium | Standard | Strong |
| 1/10 | Grey | N/A | * | * |
| 1/4 | Grey | N/A | * | * |
| 1 | Blue | * | * | * |
| 3 | Green | * | * | * |
| 6 | Yellow | * | * | * |
| 8 | Red | * | * | * |
| 14 | Brown | * | * | * |
| 25 | Mahogany | * | * | * |
| 45 | Purple | * | * | * |
| 60 | Orange | N/A | * | * |
| 90 | Yellow/Green | N/A | * | * |

Please call for prices



Precision Finishing Materials & Accessories

Algasan Liquid Diamond Products for Precision Lapping



❖ Algamant Liquid Diamond Abrasive Products.

Algamant Liquid Diamond products come in a range of formulae. Oil, Water, Emulsion or Suspensions, each is supplied in a concentration manufactured to suit specific precision lapping applications, all types are available in grades from 1/10 to 45 micron and are respectively referred to as Type EB, Type OB, Type WB and Type SP Suspension.

❖ Constant Performance control.

Manufactured using only the finest raw materials, purchased from positively authenticated sources, Algamant liquid Diamond Products are produced to provide guaranteed consistent results time after time.

❖ Versatile and user Friendly.

Algamant Liquid Diamond products have been formulated using a blend of high quality green and user-friendly chemicals to produce a stable reliable product.

❖ Economy and efficiency.

Algamant Liquid Diamond Products are available in 400g and 2000g containers. All can be used with Algalube purpose made extenders and lubricants.

The table below lists the standard micron sizes and concentrations available.

| Micron Size | Colour (Suspension only) | Concentrations | |
|-------------|-----------------------------|----------------|--------|
| | | Standard | Strong |
| 1/10 | Grey | * | * |
| 1/4 | Grey | * | * |
| 1 | Blue | * | * |
| 3 | Green | * | * |
| 6 | Yellow | * | * |
| 8 | Red | * | * |
| 14 | Brown | * | * |
| 25 | Mahogany | * | * |
| 45 | Purple | * | * |

Please call for prices



Precision Finishing Materials & Accessories

Algalube & Algacleanse for Engineering & Toolrooms



❖ **Algalube Extender and lubricant.**

Algalube lubricating fluids are specifically designed for use with the Algament range of Diamond Abrasive compounds. Acting as an all important lubricant and greatly assisting the polishing operation, ensuring that the compound is not allowed to dry out too quickly facilitating a cooler more even operation, it also make for greater economy by extending the compound. Algalube is available in three types. **Type O, Type O Blue** and **Type W**.

❖ **Algacleanse Cleaners.**

Algacleanse types **S/C** and **D/G** are designed for clean up, after polishing or lapping operations. **Type S/C** is a solvent based cleaner that is simply sprayed on then evaporates leaving no residue, making it ideal for situations where water is not an option. **Type D/G** is a spray on wash of with water cleaner, making it a suitable cleaner for heavier contamination where water use is not a problem. **Types A** and **Type N** are specifically designed for use in ultrasonic cleaning baths.

❖ **Purpose designed and user Friendliness.**

Manufactured using a blend of high quality user-friendly chemicals, both Algalube and Algacleanse have been specifically designed for each Algasan product, producing a perfect working partnership.

❖ **Economical and Simple.**

Algalube and Algacleanse is available 400gram trigger sprays that Allow easily directed spray right where it's needed. Larger 2000gram and 25litre container are available.

The table below lists each Algalube and Algacleanse type and use.

| ALGALUBE | FOR USE WITH |
|----------------------------|---|
| Type O Blue | Algament GP and OB compounds |
| Type O Colourless | Algament OB and EB slurries |
| Type W | Algament WS and SP Slurries and Suspensions |
| ALGACLEANSE | USE AREA |
| Type S/C | Any non water type clean up leaves no residue |
| Type D/G | Heavier water washable clean ups |
| Type A & Type N | Ultrasonic cleaning bath additives |

Please call for prices

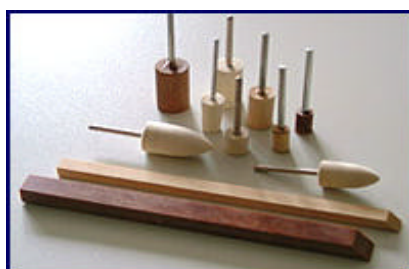


Precision Finishing Materials & Accessories

Algasan Accessories

Felt and Wooden accessories for Precision Polishing

Algasan International Ltd offers a complete range of Lapping Sticks, Felt bobs and cones and Wooden bobs and cones



Just some of the sizes available!

Hard Wood and Soft Wood Lapping Sticks

| <i>Rectangular</i> | <i>Round</i> | <i>Square</i> |
|---------------------------|---------------------|----------------------|
| 6x3x150mm | 3x150mm | 3x150mm |
| 8x6x150mm | 4.5x150mm | 4.5x150mm |
| 12x8x150mm | 6x150mm | 6x150mm |
| 19x8x150mm | 10x150mm | 8x150mm |
| 25x6x150mm | 12.7x150mm | |

Felt Bobs and Cones

Available with 3mm and 1/8" shanks

| <i>Bobs</i> | <i>Cones</i> |
|--------------------|---------------------|
| 6x12mm | 6x12mm |
| 10x12mm | 10x12mm |
| 12x19mm | 10x25mm |
| 12x25mm | 12x25mm |
| 16x32mm | 16x32mm |
| 19x32mm | 19x19mm |
| 19x38mm | 19x32mm |

Please call for prices

Algasan Ceramic Lapping and Polishing Stones

Strong, Flexible, extremely thin and Non-loading

Algasan Ceramic Stones are manufactured from long ceramic fibres that do not break or dull under the most demanding of working conditions, even when dressed to a very fine point. Economical 100% of the stone is available for use. Achieve consistent results when polishing Moulds, Dies and precision components; excellent results are obtained when used on Tool steels, Stainless, Copper, aluminium, Silicon, and even Plastics.

All grits are colour coded for convenience.



Applications: -

- ❖ Perfect for precise finishing of flat surfaces, curves, ribs and bosses on forming dies.
- ❖ High finishing efficiency can be attained without clogging, even on aluminium and copper.
- ❖ Can be used on narrow and deep slots where common conventional stones are prone to breakage.
- ❖ Ceramic stones can be used on coarse surfaces left after electro-discharge machining.

Sizes available: -

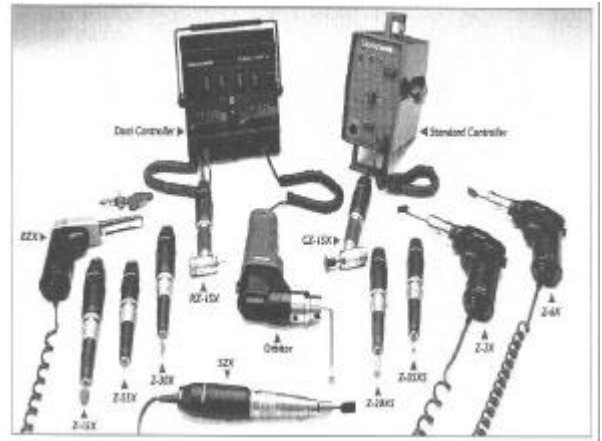
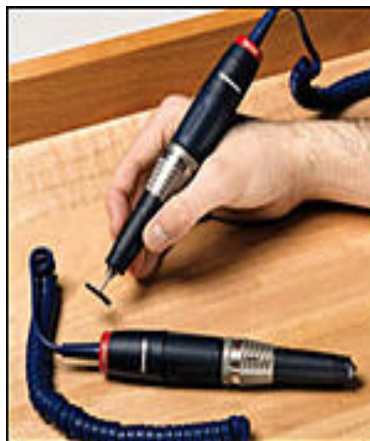
| Size | 180 Grit | 300 Grit | 400Grit | 600 Grit | 800 Grit | 1000 Grit | 1200Grit |
|---------------|----------|----------|---------|----------|----------|-----------|----------|
| 100 x 0.8 x 4 | G084 | L084 | OR084 | BR084 | B084 | W084 | R084 |
| 100 x 1 x 4 | G104 | L104 | OR104 | BR104 | B104 | W104 | R104 |
| 100 x 1 x 6 | G106 | L106 | OR106 | BR106 | B106 | W106 | R106 |
| 100 x 1 x 10 | G110 | L110 | OR110 | BR110 | B110 | W110 | R110 |
| 50 x 3 dia | G50D | L50D | OR50D | BR50D | B50D | W50D | R50D |

(Thickness 0.5mm, 1.5mm and 2mm also available upon request)

Please call for prices



The PH2X is the ideal choice for those seeking professional results.



Please call for prices



Precision Finishing Materials & Accessories



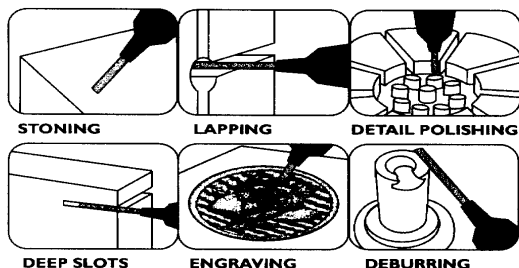
ULTRAMAX Model UM-2000

Compact and Powerful Ultrasonic Polishing and Finishing System for the 21st Century

For more than two decades, Gesswein has brought the benefits of ultrasonic polishing and finishing to mold and diemakers. Manual polishing can't compete with the ease of use, quality of results or time savings of using ultrasonic energy with conventional abrasive tools. As the recognized leader in the field, Gesswein continues to bring you the best that technology has to offer. Now, with the turn of the millennium, Gesswein gives you Ultramax UM-2000 – with the power to polish the most intricate and demanding jobs and the means to finish off your competition.

Features:

- ▶ 30 watts of output power slashes finishing time by 60%.
- ▶ Reciprocation ranges from 4-30 μ m amplitude, 20,000-30,000 strokes per second.
- ▶ Easy-to-use, uncomplicated controls make operation simple.
- ▶ Automatic power adjustment ensures efficient operation of any size tool for either aggressive roughing or precision polishing.
- ▶ Compact design uses less bench space and provides maximum portability.
- ▶ Small, comfortable handpiece with flexible cord greatly reduces polishing fatigue and increases accuracy.
- ▶ Includes a comprehensive line of tool holders for common abrasives and tooling accessories, including diamond tools, stones, ceramic stones and laps.



Specifications:

| | |
|----------------------|---------------------------|
| UM-2000 Power Pack | |
| Frequency (stroke) | 20,000-30,000 cycles/sec. |
| Amplitude (stroke) | 4-30 μ m |
| Frequency Adjustment | Automatic feedback system |
| Power Output | 30W maximum |
| Output Adjustment | Continuously variable |
| Power Consumption | 100VA |
| Electrical | 120V AC, 1 Ph, 50/60 Hz |
| Dimensions | 5½"W x 7¾"D x 5⅛"H |
| Net Wt. | 4.2 lbs. |

| | |
|-------------------|-------------------------|
| UM-2001 Handpiece | |
| Transducer | B.L.T. electrostrictive |
| Cable Length | 6½' (curl cord) |
| Screw Thread | M4 |
| Dimensions | ¾"-1"Ø x 5"L |
| Net Wt. | 5.25 oz. |

UM-2000 Standard Set includes UM-2000 Power Pack, UM-2001 Handpiece, Power Cord, Tool Holder Pouch, 8mm Spanner Wrench, 2.5mm Hexagonal Wrench, Spare Fuse, and an assortment of tools and holders, including: Diamond Stones 6x1x18mm and 6x1.5x25mm, 200 grit; Diamond Files 5x1x40mm and 4x0.5-0.8x15mm, 200 grit; Ceramic Stones 1x6x40mm and 3Øx30mm, 800 grit; and Clamp Tool Holders 1mm flat and 3mm round.

Please call for prices



Precision Finishing Materials & Accessories

Ultramax DF
For Both Ultrasonic and Mechanical Applications.



Ultramax DF gives you the versatility of both ultrasonic and mechanical applications.

This unit will accommodate the UF-9700 ultrasonic hand piece and the entire range of Power Hand 2X mechanical hand pieces. When used with the Ultramax DF, the mechanical hand pieces will have 30% more Torque. The Ultramax DF is supplied with all of the following accessories.

- ***Power Pack***
- ***UF-9700 Hand piece in a wooden box***
 - ***6/4mm Tool Adaptor***
 - ***Hand piece Rest***
- ***Tool Box with a 30-piece tool set that includes 4 diamond files, 3 diamond stones, 2 resin- bonded diamond stones, 2 lapping tools, 1 clamp tool holder for round tools, 4 clamp tool holders for flat tools, 1 protector sleeve and 1 large bevelled hand piece protector sleeve, 8mm wrench, 2x 10mm wrenches, a 13mm wrench, 1 Allen wrench, a set of earplugs and an extra fuse.***

Please call for prices

Ultrasonic Cleaning Baths



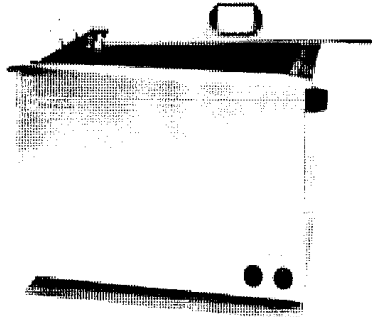
Ultrasonic Cleaning Units Sonomatic®

| | |
|------|------|
| 1000 | 1400 |
| 1500 | 1800 |
| 2200 | 2800 |

| Sonomatic® | | 1000 | 1400 | 1500 | 1800 | 2200 | 2800 |
|--|----------------|---|------|---|------|---------|------|
| Technical Data | | | | | | | |
| Overall Dimensions: | Length [mm] | 390 | | 425 | | 590 | |
| | Width [mm] | 290 | | 340 | | 360 | |
| | Height [mm] | 290 | 340 | 290 | 340 | 290 | 340 |
| Weight | approx. [kg] | 8 | 8 | 10 | 10 | 12 | 12 |
| Outer Case: | | Rigidised stainless steel | | | | | |
| Internal Dimensions: | Length [mm] | 300 | | 327 | | 505 | |
| | Width [mm] | 240 | | 300 | | 300 | |
| | Height [mm] | 150 | 200 | 150 | 200 | 150 | 200 |
| Basket Size: | Length [mm] | 240 | | 270 | | 445 | |
| | Width [mm] | 190 | | 250 | | 255 | |
| | Height [mm] | 115 | 150 | 95 | 150 | 95 | 150 |
| Basket Mesh Size: | [mm] | 10 x 10 | | 10 x 10 | | 10 x 10 | |
| Tank Volume: | approx. [ltr] | 9 | 12 | 14 | 18 | 22 | 26 |
| Internal Tap and Drain, swivelling: | | ✓ | ✓ | ✓ | ✓ | ✓ | ✓ |
| Tank Material: | | stainless steel | | | | | |
| High Frequency Generator: | | Automatic Constant Power within +/- 5% | | | | | |
| (Double half wave) | | | | | | | |
| HF-Peak Power: | [Watt] | 300 | 300 | 450 | 450 | 600 | 900 |
| Effective HF-Power Output: | [Watt] | 150 | 150 | 225 | 225 | 300 | 450 |
| Frequency | approx. [kHz] | 33 | 33 | 33 | 33 | 33 | 33 |
| Mains voltage : | | 220/240V - 50/60Hz | | | | | |
| Power consumption: | approx. [Watt] | 1050 | 1050 | 1200 | 1200 | 1550 | 1700 |
| Fuses: | [A] | 6,3M | 6,3M | 8M | 8M | 10M | 10M |
| Heating capacity: | approx. [Watt] | 600 | 600 | 900 | 900 | 1200 | 1200 |
| Electronic Temperature Control of Cleaning Fluid | | thermostatically controlled up to approx. 80° C | | | | | |
| Electronic Timer Control, Ultrasonics | | 0 - 60 Minutes and ∞ (programmable) | | | | | |
| Noise Level | approx. [dBA] | 64 | 64 | 66 | 66 | 68 | 72 |
| Maintenance free: | | ✓ | ✓ | ✓ | ✓ | ✓ | ✓ |
| CE-Conformity | | ✓ | ✓ | ✓ | ✓ | ✓ | ✓ |
| Smaller and larger Units also available with 40kHz and 33kHz Ultrasonic Frequency Accessories: Lids (ABS) and Baskets, stainless steel - Ask for Details of Rinse and Dryer Units | | | | | | | |
| Last Revision: 21/04/00 | | | | Specification may be changed without notice | | | |

Please call for prices

Ultrasonic Cleaning Baths



Ultrasonic Cleaning Units Sonomatic®

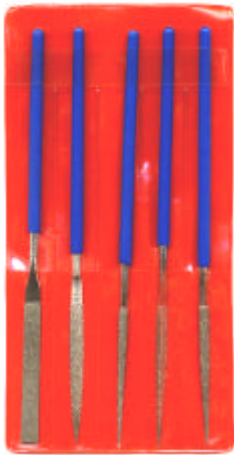
| | | |
|---------|---------|---------|
| 2900 | 3800 | 4800 |
| 5800 | 7800 | 98/1kW |
| 120/1kW | 160/1kW | 200/1kW |

| Sonomatic® | | | 2900 | 3800 | 4800 | 5800 | 7800 | 98/1kW | 120/1k | 160/1kW | 200/1kW |
|--|---------|---------|--|------|-------|---------|------|--------|-----------------------------|---------|---------|
| Technical Data | | | | | | | | | | | |
| Overall Dimensions: | Length | [mm] | 600 | | | 700 | | | 800 | | |
| | Width | [mm] | 400 | | | 600 | | | 700 | | |
| | Height | [mm] | 430 | 530 | 630 | 500 | 550 | 650 | 550 | 650 | 750 |
| Weight | | | 25 | 35 | 40 | 50 | 60 | 70 | 90 | 95 | 110 |
| Outer Case: | | | Rigidised stainless steel | | | | | | | | |
| Internal Dimensions: | Length | [mm] | 500 | | | 600 | | | 700 | | |
| | Width | [mm] | 300 | | | 500 | | | 600 | | |
| | Height | [mm] | 200 | 300 | 400 | 250 | 300 | 400 | 300 | 400 | 500 |
| Basket Size: | Length | [mm] | 490 | | | 585 | | | 690 | | |
| | Width | [mm] | 295 | | | 485 | | | 560 | | |
| | Height | [mm] | 165 | 265 | 365 | 215 | 265 | 365 | 255 | 355 | 455 |
| Basket Mesh Size: | | [mm] | 12.5 x 12.5 | | | 25 x 25 | | | | | |
| Tank Volume: | approx. | [ltr] | 28 | 38 | 48 | 58 | 78 | 98 | 120 | 160 | 200 |
| with Tap (external) and Drain 3/4" (male) | | | ✓ | ✓ | ✓ | ✓ | ✓ | ✓ | ✓ | ✓ | ✓ |
| with Overflow 1" (female) | | | ✓ | ✓ | ✓ | ✓ | ✓ | ✓ | ✓ | ✓ | ✓ |
| with Fresh Water Inlet 3/4" (male) | | | ✓ | ✓ | ✓ | ✓ | ✓ | ✓ | ✓ | ✓ | ✓ |
| Tank Material: | | | Stainless Steel, 1.6mm wall thickness, plasma welded | | | | | | | | |
| High Frequency Generator: | | | Double half wave - Automatic Constant Power within +/-5% | | | | | | | | |
| HF-Peak Power: | | [Watt] | 900 | 1200 | 1200 | 1500 | 2000 | 2000 | 2000 | 2000 | 2000 |
| Effective HF-Power Output: | | [Watt] | 450 | 600 | 600 | 750 | 1000 | 1000 | 1000 | 1000 | 1000 |
| Frequency | approx. | [kHz] | 33kHz | | | | | | | | |
| Mains voltage : | | | 220/240V - 50/60Hz | | | | | | 380/440V, 50/60Hz, +N+Earth | | |
| Power consumption: | approx. | [Watt] | 1700 | 2700 | 2700 | 2900 | 3200 | 3200 | 7200 | 7200 | 7200 |
| Fuses: | | [A] | 10M | 16M | 16M | 16M | 16M | 16M | 3x16M | 3x16M | 3x16M |
| Heating capacity: | approx. | [Watt] | 1200 | 2000 | 2000 | 2000 | 2000 | 2000 | 6000 | 6000 | 6000 |
| Electr. Temp. Control of Cleaning Fluid | | | Electronic thermostat control up to approx. 80° C | | | | | | | | |
| Heatup Time: ambient to 70°C | | [hours] | 1.25h | 1.75 | 2.25h | 3.0h | 3.5h | 4.0h | 1.0h | 1.25h | 1.5h |
| Electronic Timer Control, Ultrasonics | | | 0 - 60 Minutes and ∞ (programmable) | | | | | | | | |
| Noise Level | | [dBA] | 74 | 74 | 74 | 75 | 76 | 76 | 76 | 76 | 76 |
| Maintenance free: | | | ✓ | ✓ | ✓ | ✓ | ✓ | ✓ | ✓ | ✓ | ✓ |
| CE-Conformity | | | ✓ | ✓ | ✓ | ✓ | ✓ | ✓ | ✓ | ✓ | ✓ |
| <p>Note: All above Units optionally available mit external Generator and Remote Control. From Unit Size 7800 upwards, apart from 1kW Ultrasound, also 1.5kW or 2kW Ultrasound Power available. (external Generator with Nominal Output Power Setting facility from 30% bis 100%) Please ask for more Information.</p> | | | | | | | | | | | |
| <p>Smaller and Higher Power Units are also available with 40kHz and 33kHz Ultrasonic Frequency Accessories: Lids and Baskets, stainless Steel - Ask for Details of Rinse and Dryer Units</p> | | | | | | | | | | | |
| Last Revision: 21/04/00 | | | Specification may be changed without notice | | | | | | | | |

Please call for prices

Diamond File Sets

15 cm. Set of Five Files



**Five different shapes
Medium**

16 cm. Set of Nine Files



**Tapered flat files, three widths
in course, medium and fine.**

18 cm. Set of twelve Files



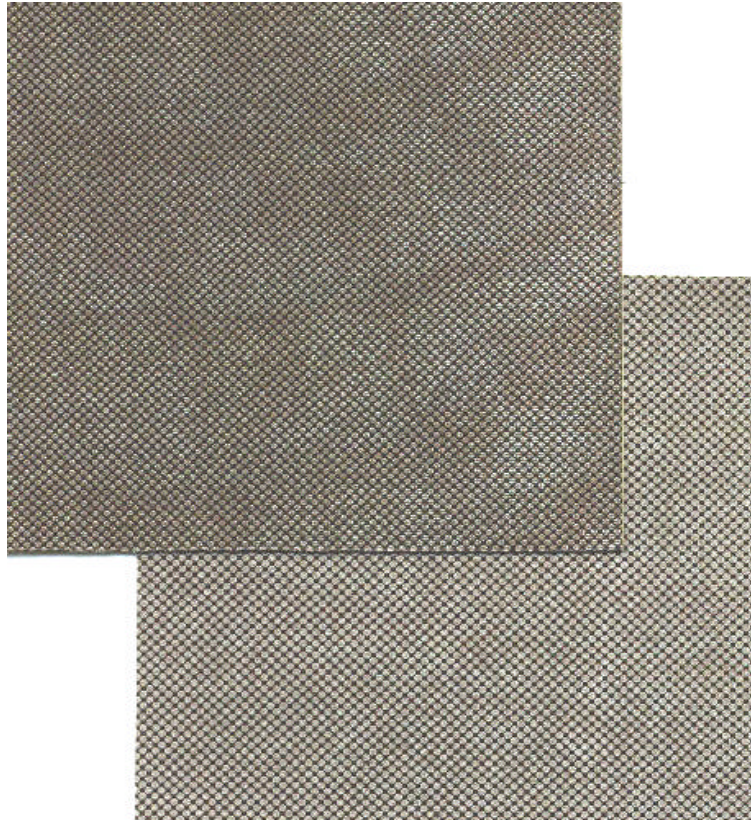
**Versatile, Tapered flat files, four widths
In course, medium and fine**

Please call for prices



Precision Finishing Materials & Accessories

Self Adhesive Diamond Cloth



**Self-adhesive 100mm squares.
Available in 60,120, 200, 400,800, and 1200 grits**

**Multiple uses around the toolroom can easily be cut to size.
Ideal for fabricating or relining finishing tools.**

Please call for prices



Precision Finishing Materials & Accessories

Cloths



A full range of Polishing & Lapping cloths are available from Algasan. In a wide choice of types and sizes, manufactured in materials with or without nap.

Plain backed or self-adhesive.

***Silk
Nylon
Chemotextile
Royale
Alphacloth
Etc.***

Please ask for your specific type.

Internal helical Slot laps



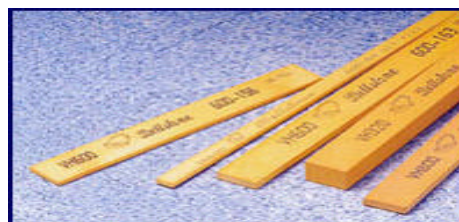
Internal laps & Arbours.

| Lap Sizes | Length | Arbor No. | Shank Dia | Shank Length | Taper Length | Expander No |
|----------------------------|--------|-----------|-----------|--------------|--------------|-------------|
| 3/64 | 1/2 | 4/0 | 1/8 | 3/4 | 1 1/2 | 4/0 |
| 1/5, 5/64 | 5/8 | 3/0 | 1/8 | 3/4 | 1 1/2 | 3/0 |
| 3/32, 7/64 | 3/4 | 2/0 | 1/8 | 3/4 | 1 5/8 | 2/0 |
| 1/8, 5/32, 9/64, 11/64 | 7/8 | 0 | 1/8 | 3/4 | 1 3/4 | 0 |
| 3/16, 13/64 | 13/8 | 1 | 3/16 | 1 | 2 3/4 | 1 |
| 7/32, 15/64 | 13/4 | 2 | 3/16 | 1 | 3 | 2 |
| 1/4, 9/32, 17/64, 19/64 | 2 | 3 | 3/16 | 1 | 4 | 3 |
| 5/16, 11/32, 21/64, 23/64 | 2 | 4 | 7/32 | 1 | 4 | 4 |
| 3/8, 13/32, 25/64, 27/64 | 2 1/2 | 5 | 9/32 | 1 1/2 | 5 | 5 |
| 7/16, 15/32, 29/64, 31/64 | 2 1/2 | 6 | 15/16 | 1 1/2 | 5 | 6 |
| 1/2, 17/32, 9/16, 19/32 | 3 1/4 | 7 | 3/8 | 1 1/2 | 6 | 7 |
| 33/64, 35/64, 37/64, 39/64 | 3 1/4 | | | | | |
| 5/8, 21/32, 11/16, 23/32 | 3 1/4 | 8 | 13/32 | 1 1/2 | 6 | 8 |
| 41/64, 43/64, 45/64, 47/64 | 3 1/4 | | | | | |
| 3/4, 25/32, 13/16, 27/32 | 3 1/2 | 9 | 1/2 | 2 | 7 | 9 |
| 49/64, 51/64, 53/64, 55/64 | 3 1/2 | | | | | |
| 7/8, 29/32, 15/16, 31/32 | 3 1/2 | 10 | 9/16 | 2 | 7 | 10 |
| 57/64, 59/64, 61/64, 63/64 | 3 1/2 | | | | | |

Please call for prices

Bellstones are pre-filled with lubricant during the manufacturing process. This aids the cutting action by keeping the pores open.

| <i>Grade</i> | <i>Characteristics</i> |
|----------------|--|
| <i>Type VH</i> | Made from premium grade aluminium oxide. Fast cutting action removes the tough, hard scale left by Electric Discharge Machining. Suitable for the rough and middle finishing of heat treated moulds, hard alloy tool steel and delicate engraving moulds |
| <i>Type MS</i> | Made with aluminium oxide in a low resistance bonding material. Has good impact strength and cutting ability. Suitable for curved surfaces on normal steel. |
| <i>Type HS</i> | Made from premium grade Silicon Carbide. Fast cutting action from the sharp edged abrasive grains. Suitable for hard materials, Stainless and Die steels. |

[illegible]

GENERAL TERMS OF BUSINESS

All quoted prices are exclusive of VAT and Carriage

Delivery: - normally 2-3 Days

Account Terms: - 30 Days Nett

ALGASAN INTERNATIONAL LTD.

**Unit 5 Pettings Court Farm, Hodsoll Street, Nr Wrotham
Sevenoaks Kent TN15 7LH**

Tel. 01732 824829 Fax. 01732 824828

www.algasan.co.uk e,mail sales@algasan.co.uk